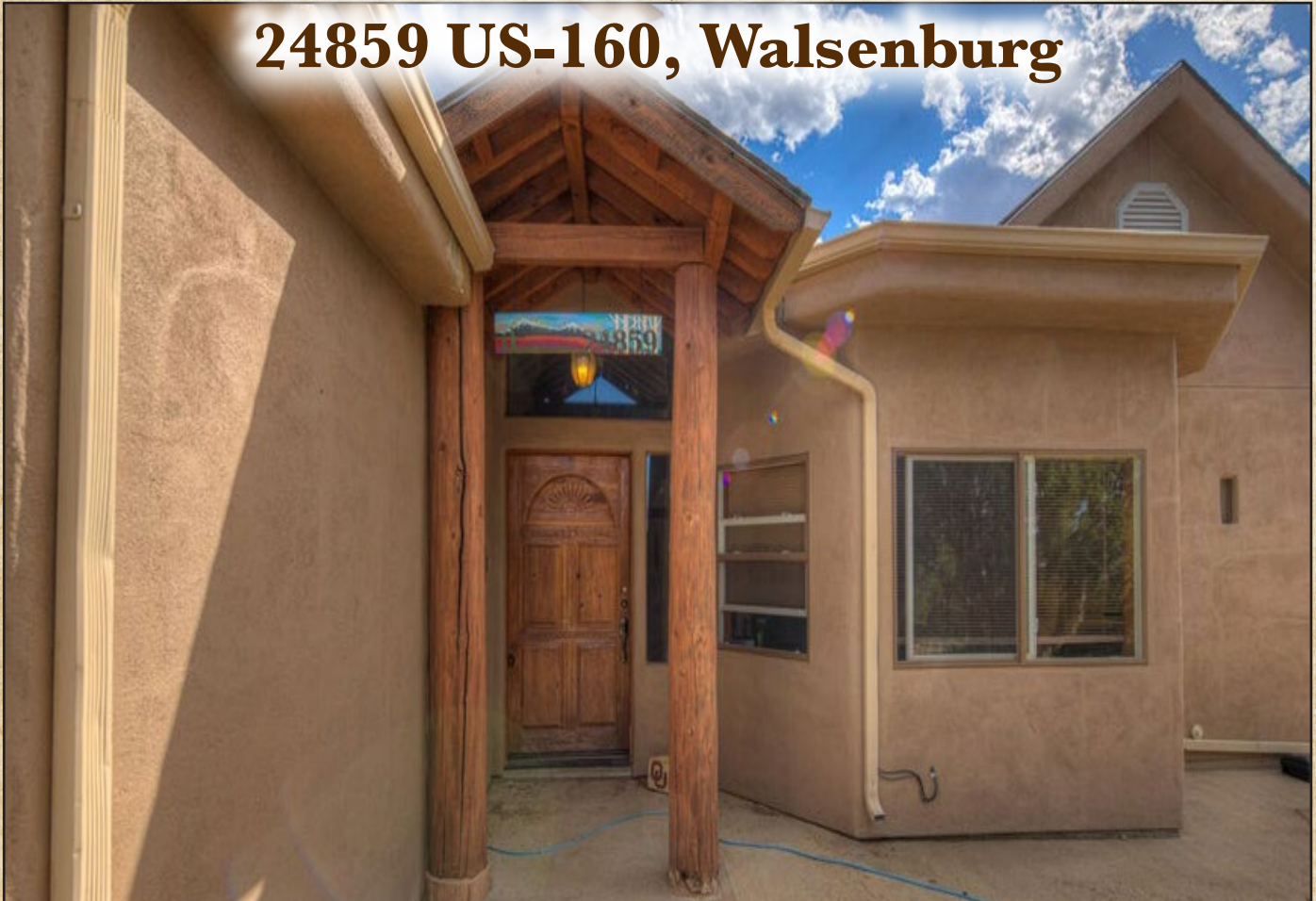


BACHMAN & ASSOCIATES

FEATURING THE MOST SPECTACULAR REAL ESTATE IN SOUTHERN COLORADO

\$449,999

24859 US-160, Walsenburg



Stunning four bedroom, two bathroom southwestern style home sits on 2+ acres behind the Black Diamond Park gates but not associated with the park. Terracotta tile floors down the entry way hall to the spacious open concept living space with tall 14' ceilings with beautiful warm wood vigas. A wood burning stove and south facing windows keep the home cozy all winter long. In the large open kitchen, you will find a wet bar, island with cooktop and vent hood and a pantry. The main floor master bedroom also has large south facing windows, large walk in closet and a huge soaking jetted tub, double sinks and walk in shower. This homes also has an attached three car garage! A southern patio and fenced yard perfect for entertaining. This home is on City of Walsenburg water and just a few minutes away from Lathrop State Park!.

BACHMAN & ASSOCIATES
PO BOX 50, 222 SOUTH MAIN STREET
LA VETA, COLORADO 81055
DiscoverBachman.com
719-742-5551

Branch Locations In Cuchara, Walsenburg and Trinidad



Nicole Sudderth
Broker Associate
303-944-7319

Property Summary

Four Bedrooms

Two Bathrooms

2.20 Acres

Year Built: 1997

3,868 Square Feet

Water: City

Sewer: Septic

2022 Taxes: \$1,459.50

Heat: Electric Forced Air

Three Car Attached Garage

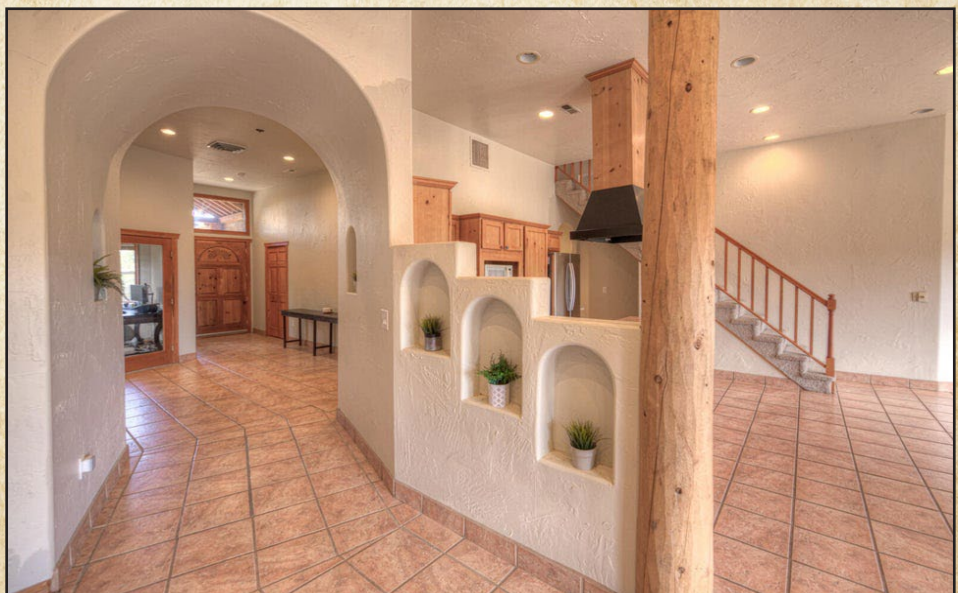
Year Round Gravel Road
Access

Appliances Included

Walk-In Closet

Beautiful Mountain Views

Move in Ready







Broker Associate

Nicole Sudderth

303-944-7319

Nicole@BachmanAndAssociates.com

DiscoverBachman.com

